

Aligned to the way you teach

MyPedia is a complete teaching solution, designed to deliver engaging lessons and improve learner performance.

Teachers can access offline, interactive *MyPedia* Lesson Presentations that provide a CAPS-aligned, front-of-class teaching solution that will simplify lesson preparation time.

Assessments

MyPedia gives you access to pre- and post-skills mapping assessments.

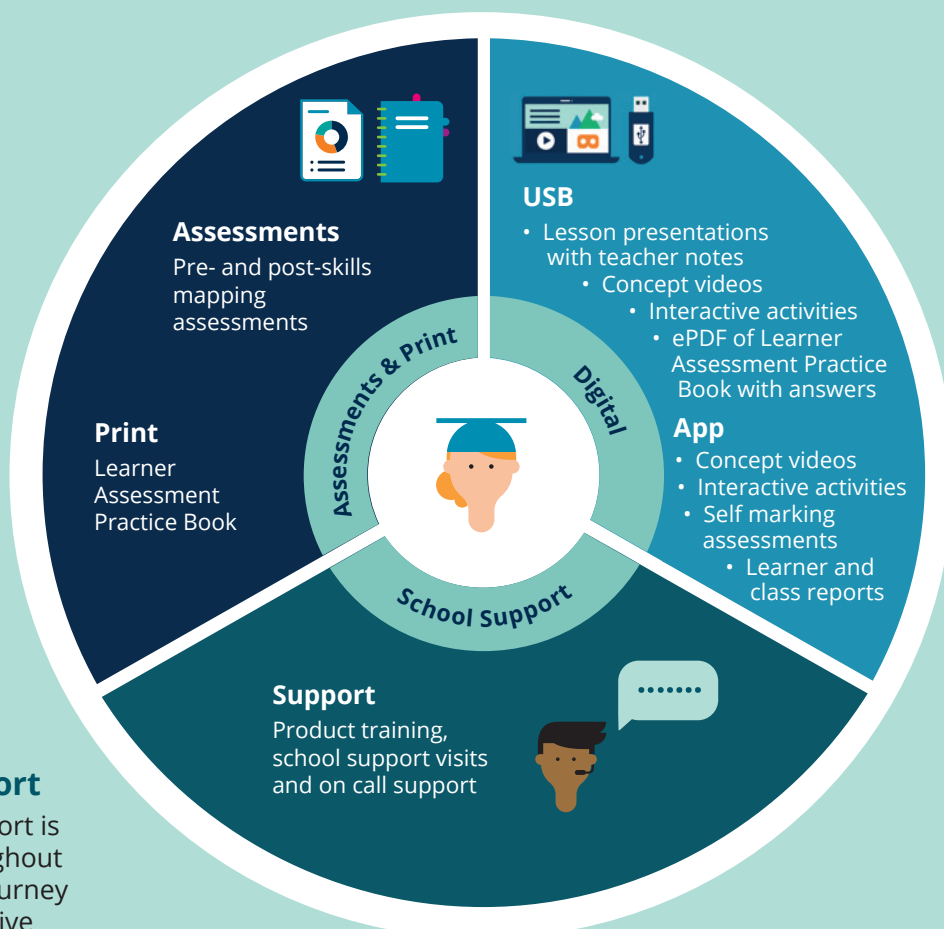
Print

Curriculum aligned *MyPedia* Learner Assessment Practice Books provide leveled activities for learners to enhance their skills.

Digital

The *MyPedia* USB provides interactive lesson presentations that can be easily projected for front-of-class use. Teacher support notes are provided. No internet connectivity is needed.

The *MyPedia* App offers access to video content, interactive activities, assigned assessments and ability to view learner progress.



School support

Dedicated support is provided throughout your *MyPedia* journey to ensure effective implementation.

Shaping the future of learning

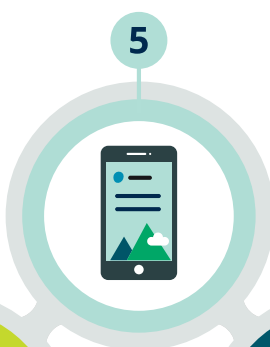
MyPedia offers a blended learning solution that enables you to engage your learners, enhance cognitive skills and ultimately improve results.

How *MyPedia* will fit into and enhance your current teaching practice.

1. **Before class**, learners complete a paper-based pre-skills mapping assessment that provides a detailed analysis of learner and class performance. This helps the teacher identify the skills learners need to focus on.

3. Learners do leveled activities, in their Learner Assessment Practice Books to reinforce content taught and to develop critical thinking skills. Teachers can access the answers to the activities on the USB.

5. Through the *MyPedia* App, teachers can assign content videos for learners to review at home and interactive activities for additional practice. Teachers and learners can connect with the class discussion option.



2. **In class**, the teacher uses the interactive Lesson Presentations to deliver a lesson. Teachers can use the videos to explain concepts and the interactive activities to practise concepts.

4. The teacher can use the *MyPedia* App to set self marking assessments for learners to complete in class or at home. Teachers are able to track learner progress through a dashboard.

6. Learners are given post-skills mapping assessments that test their concept knowledge and progress.

Throughout your *MyPedia* journey a School Relationship Manager (SRM) will provide implementation support, product training, on site visits once a term and ongoing support via telephone and email.

Customer Services

T: 021 532 6008

E: pearsonza.enquiries@pearson.com

Book a demo for your school

E: pearson-za.mypediasupport@pearson.com

Learn more at

za.pearson.com/MyPedia.html